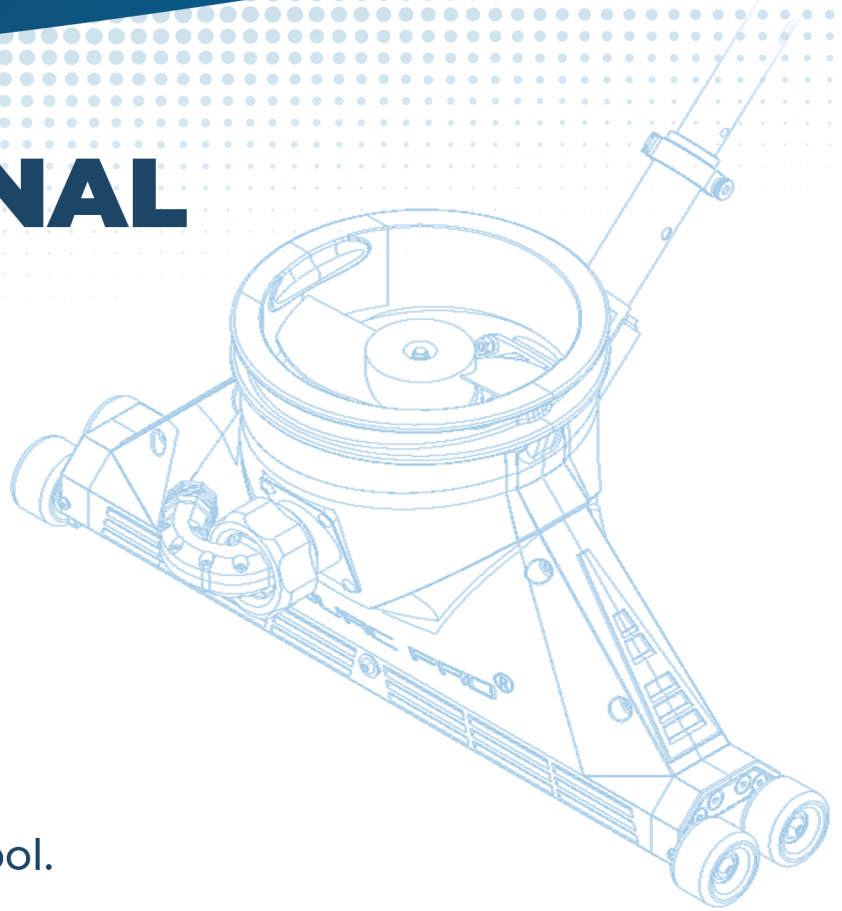


## PROFESSIONAL SWIMMING POOL VACUUM CLEANER



The fastest, easiest and most efficient way to clean your pool.

### PACKING LIST

- 1 Wow Vac Pro: vacuum and motor
- 1 battery housing box \*
- 12 meters (40 feet) of floating insulated power cable

#### Parts Box:

- 2 heavy rubber battery supports
- 1 extension pole adaptor (for standard OD 1.25", ID 1.125" type)  
With assembly hardware
- 1x 60 micron, 1x 80 micron, 1x 106 micron fine mesh bags (total 3pc)
- 1200 micron storm mesh bag (1pc)
- 1x small impeller (as accessory)  
Small impeller is used for collecting large debris.  
The standard impeller is installed.

\* (battery and charger not included)

## Contents

Intro . . .	P3
Quick Setup Guide . . .	P3
Battery Details . . .	P4, 5
Accessories: Extension Pole . . .	P6
Accessories: Catch Bags . . .	P7
Maintenance . . .	P8

## Intro

Wow Vac Pro Ltd manufactures and supplies state-of-the-art 12 volt powered pool vacuums, designed to save you time and money.

Spend less time cleaning your pool and get better results faster!

## Quick Start Guide

- 1 - Unbox and verify contents match the packing list.
- 2 - Install the rubber battery supports into the battery box.
- 3 - Install your 12v deep cycle battery and ensure it is charged.
- 4 - Install the adaptor and extension pole.
- 5 - When necessary, swap the impeller for heavy debris.
- 6 - Select the appropriate catch bag and secure the lanyard.
- 7 - If using the long bag (60 micron), add the float provided.
- 8 - Connect the plug.
- 9 - Place the vacuum unit into water before running.
- 10 - Switch it on and start vacuuming your pool.

If the bag does not fill, check the battery charge.

If loss of suction occurs the bag material may be clogged. Simply turn the bag inside out and rinse it clean.

When removing the Wowvacpro from a pool ensure that the pole is not in the extended position. Do not use the pole to lever the vacuum out, but lift it in a vertical motion holding close as to the vacuum as possible. Caution should be taken to protect the bag from the sides of the pool. Do not remove the bag from the vacuum to empty it until the motor is switched off.

Never leave the vacuum running unattended.



## BATTERY DETAILS

The battery used is a 12V Deep Cycle type battery, which will give the best longevity, both for run-time per charge and for the total number of discharge-charge cycles.

The battery for the Wowvac Pro is a BCI Group Size U1. The actual dimensions of this battery can vary from the stated dimensions, measuring 195mm x 130mm x 180mm (7.67' x 5.13' x 7.09').

To allow for variations in size and to protect the switch wiring, the rubber battery supports are supplied in the Parts Box. Place the bumpers into the battery box before the battery. J and F type terminals are the most common although others may work as well.

A full charge will give around 2.5 hours of run-time.

You will also need a charger. We recommend an automatic charger between 6 and 12 amps, suitable for a deep cycle battery. There are good options for 7.5 amp chargers available. Do not use a trickle charger or charger under 6 amps for a deep cycle battery.

### Battery:

Voltage: 12

Format: BCI Group U1

Lead Acid Type: Deep Cycle

Capacity: 35AH

Chemistry: Lead Acid

Lead Acid Design: AGM

Product Category: Sealed

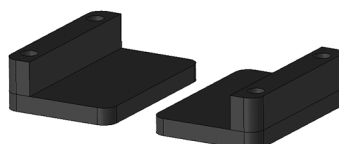
Lead Acid

Terminal Type: J

\* not included

Place the supports into the battery box before the battery.

These will be packaged separately in the Parts Box.





## BATTERY DETAILS

The battery is not included, but can be purchased from most battery vendors. Make sure that you insert the rubber battery supports beneath the battery.

**IMPORTANT:** Once the battery is connected ensure that the impeller moves in an anticlockwise direction. If it turns clockwise it is connected to the wrong terminals and you will need to swap them over accordingly.

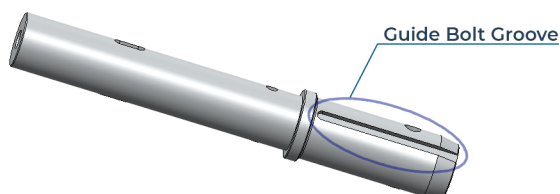




## ACCESSORIES

The Extension Pole Adaptor allows the use of standard extension poles with an internal diameter of 1" (25.4mm). Use an aluminum pole. These poles can be purchased at a pool cleaner supply shop.

Extension Pole Adaptor



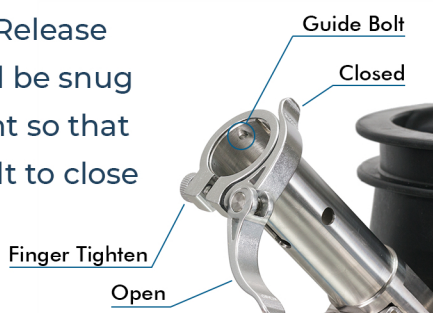
The extension pole adaptor has a guide bolt that fits into a groove to prevent unwanted rotation.

The adaptor is then secured by a quick-release and a retaining pin.

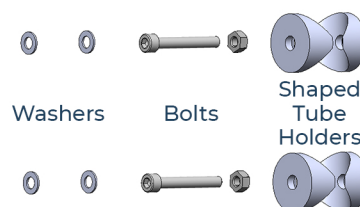
The adaptor fits into the pole mount by a simple quick-release and a retaining pin. For best results, insert the retaining pin on the opposite side from the securing cable.



- 1** The Quick Release Bolt should be snug but not too tight so that it is very difficult to close or open.



- 3** Hardware is included to install the extension pole securely.

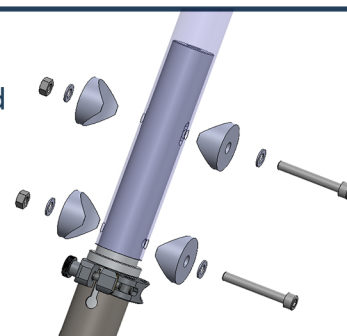


**2**

Align the groove to the guide bolt



- 4** The Extension Pole is secured by two bolts that pass through shaped pole holders.



## ACCESSORIES

The Wowvacpro is supplied with 4 bags. Your “go-to” bag would be the 80 micron. For indoor pools we recommend the fine mesh bag 60 micron. The storm bag of 1,200 microns is for heavy debris and can be used with the smaller impeller, which is supplied.

There are two tags for the foam floats. These will help keep the bag oriented correctly and allow good flow through the mesh material.

Installing the bag is easy to do, with a friction lock for the lanyard. Simply place the bag over the lip, pull it tight and press the cord into the lock channel.

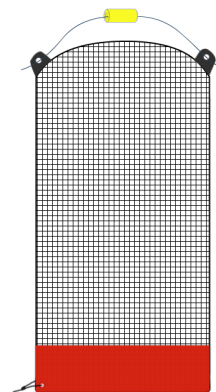
If loss of suction occurs the bag material may be clogged. Simply turn the bag inside out and rinse it clean.

Parts available at: [wowvacpro.com](http://wowvacpro.com)

There is a yellow float and a length of paracord. Tie the cord to the two tabs, with the float in the middle. This applies only to the 100mm bag. The shorter bags do not require a float.

The bags are color coded to show the mesh size.

	<b>Storm Mesh</b> 1200 micron, 75cm long
	<b>Fine Mesh</b> 80 micron, 75cm long
	<b>Fine Mesh</b> 106 micron, 75cm long
	<b>Fine Mesh</b> 60 micron, 100cm long





## MAINTENANCE

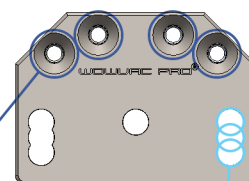
There is very little maintenance that needs to be done on the Wowvac Pro.

We recommend you change your bags every 3 months. Should a tear occur caused by sharp debris a zip tie or gaffer tape can be used to plug it and prolong longevity.

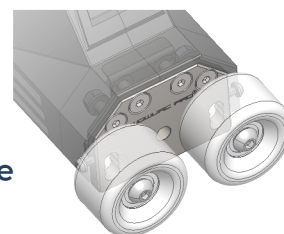
It is possible that hair and long plant fibres can collect around the drive shaft so this should be checked periodically and any debris removed.

### Adjustable Wheels

- Remove plate mounting bolts
- Choose height level for axle bolts
- Re-assemble



A single large wheel is available on our website.



There is a tool included for removing the retaining nut.

Once the propeller is free, remove the drive pin and remove debris. Do not lose the drive pin and make sure it is centered to the drive shaft before re-assembling.

There is a 1 year warranty. For more information, visit our website or send us an email.

Periodically clean under the impeller to clear hair, long plant fibers and other debris that can collect around the drive shaft.

- Use the star drive tool to remove the retaining nut
- Slide the impeller off
- Remove the drive pin
- Replace and center the drive pin
- Replace the impeller and ensure that the drive pin engages with the slot
- Tighten the retaining nut using the star drive tool
- Re-assemble and resume use

